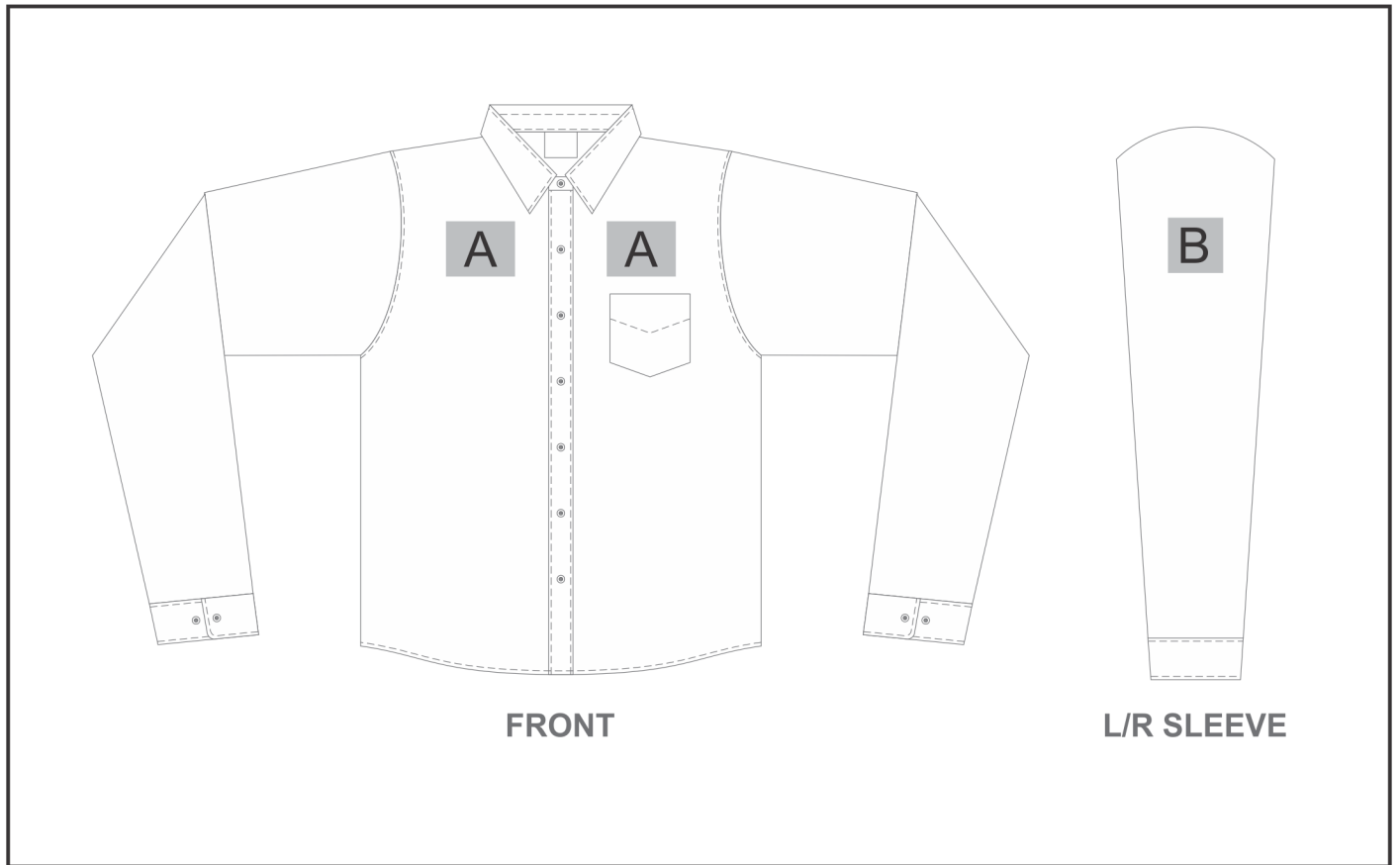


CW-AL-181-A

Mens Long Sleeve Oxford Shirt



Need to know:

- Includes 1-Position Digital Transfer (setup fees apply)
- DTC Inclusive Parameters: Left/Right Chest or Back = 100mm x 100mm.

Branding Options:

Position A

1. Digital Transfer Clothing A6 (DTC-A6)
Full Colour
Size: 80mm wide x 80mm high
2. Embroidery (EMB-A)
N/A
Size: 100mm wide x 80mm high
3. Screen Print (SP)
1 Colour
Size: 80mm wide x 80mm high
4. Silicone (STP-A)
N/A
Size: 30mm wide x 30mm high
5. Silicone (STP-B)
N/A
Size: 50mm wide x 50mm high
6. Silicone (STP-C)
N/A
Size: 80mm wide x 80mm high

Position B

1. Digital Transfer Clothing A6 (DTC-A6)
Full Colour
Size: 80mm wide x 80mm high
2. Embroidery (EMB-A)
N/A
Size: 80mm wide x 60mm high
3. Screen Print (SP)
1 Colour
Size: 80mm wide x 80mm high
4. Silicone (STP-A)
N/A
Size: 30mm wide x 30mm high
5. Silicone (STP-B)
N/A
Size: 50mm wide x 50mm high
6. Silicone (STP-C)
N/A
Size: 80mm wide x 80mm high